

# Voyager

© It's a better place you own...

www.goldenhomes.co.nz

**319.3 sqm for just  
\$291,000 gst incl**

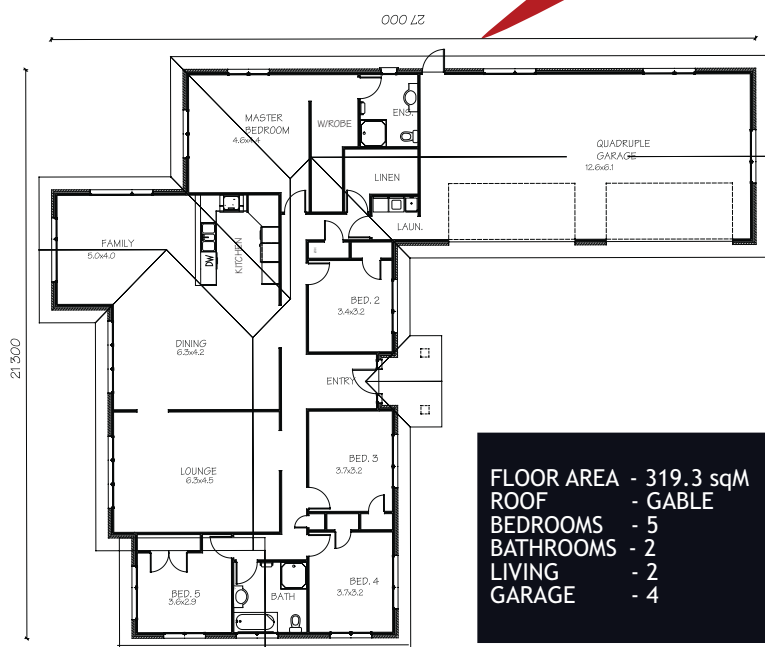
**land not included**



**Choose from our  
plans, your plans or  
design and build.**

**If you can find a house with a  
better specification and price ...  
Then frankly we'd suggest you buy it!**

- ✓ Double Glazed windows & doors
- ✓ Timber or ZOG 0.75mm gauge/90mm steel frames
- ✓ Brick or ERFF plaster finish panel cladding system
- ✓ Gerard Rockport shingle tile or Corona Shake roof
- ✓ Gib 10mm Ultraline to all walls
- ✓ Gib 13mm Ultraline Plus with pearl coat to ceilings
- ✓ Gib Alto 2 step cove
- ✓ R2.2 Batts to walls
- ✓ R3.6 Batts to ceiling
- ✓ Clearlite Dama Senso toilets with soft close lids
- ✓ Michel Cesar Bullo wall hung china vanities c/w soap dispenser
- ✓ Methven Minimalist tapware
- ✓ Methven Satinjet sliding shower rails
- ✓ HJ Cooper 250 ltr stainless steel hot water cylinder
- ✓ Clearlite Millenium 1.0m x 1.0m showers with anodised doors
- ✓ F&P appliances including double dishdrawers
- ✓ F&P Designer Series water dispensing fridge
- ✓ F&P Designer Series Apex rangehood with black glass
- ✓ Keyless remote control burglar alarm system
- ✓ Electronic control home ventilation system
- ✓ Hard wired smoke detectors
- ✓ Heated mirrors and extractor fans with halogen light
- ✓ Heated ladder towel racks
- ✓ Bathroom fan heaters and vanity lights
- ✓ 50mm thick Kitchen bench tops
- ✓ Undermounted Kitchen sink insert
- ✓ Arborline door and drawer fronts
- ✓ KK11 double pull out rubbish bins
- ✓ Innotech silent self close drawer runner system
- ✓ Pelmet and bulkheads to top of Kitchen cabinets
- ✓ Glass splash back and bench upstands
- ✓ and much much more !



**Now includes  
Fisher & Paykel  
water dispenser  
refrigerator  
as standard!**

**All this  
for \$911 sqm**



**GOLDEN HOMES®**

- To view our full range of plans and inclusions, please visit our Show Home:
- Address: Cnr McPherson Road and State Highway 22, Drury
- Hours: Monday – Thursday 9.00am – 4.30pm, Friday 9.00am – 4.00pm, After hours by appointment
- Phone: 09 294 6065 • Fax 09 294 6075
- Email counties@goldenhomes.co.nz