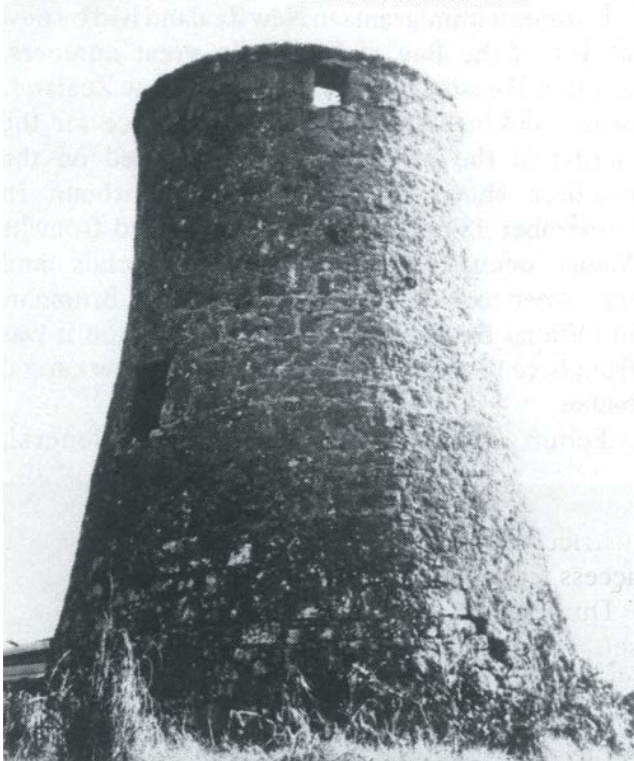




LEFT: ANCIENT EUROPEAN TRUSSED BURIAL AT THE OTAGO ROCK SHELTERS.

TOP: MUMMIFIED HEAD RETURNED TO NZ IN 1998 FROM A BRITISH MUSEUM.

BELOW: ROBERT ROBERTSON'S MILL AT ONEHUNGA, AUCKLAND, WHICH CRUSHED UP AN ESTIMATED 60,000 NON-MAORI SKELETONS DURING THE 1860'S - 1870'S FOR FERTILIZER PRODUCTION.



This is a picture of Eden Mill in the Auckland suburb of Onehunga, where, for over a decade, it was used to grind up the skeletal remains of countless generations of Patu-paiarehe into fertiliser. Maori of the time had no concerns about the fate of these "Tangata Whenua" bones and openly stated to the authorities, 'Do as you wish [with these bones], for these are not our people'.

but by their size and the skull shape alone, they were clearly not Polynesian. Pre-European Maori had a distinct skull, including a 'rocker' jaw, not found in Europeans.

Noel: "A number of years ago around one of the stone cairns near the Waipoua forest, an archaeologist excavated down 2.3 metres, going through two different tephra layers. Carbon datings proved there were people living in this country over five thousand years ago. We have come across a number of caves throughout New Zealand where these peoples were laid to rest. We no longer register these sites, to protect them from destruction, as anything pre-Maori is being buried or destroyed, including their dwellings. In the Waipoua Forest there are hundreds of stone walls, stone dwelling, stone fireplaces and altars - and petroglyphs carved in the stone. A large one that has fallen over had the design of an early ship carved on it. "This country over the centuries has been visited by many peoples from many different countries - some we know of are the Greeks, Chinese, French, Portuguese and Spanish. The Chinese have an early world map showing New Zealand on it. In a museum in Naples there is a marble statue of ATLAS with a globe on his shoulders, made by the Greeks and modified by the Romans in 150 AD. The Greeks by this time had established the world was round and a time frame round the world of 360 units, which much later in time became latitudes of degrees. The globe is of the heavenly night sky over Athens at that time showing the Tropic of Cancer, the equator, the Tropic of Capricorn, the Antarctic Circle - and New Zealand. The Polynesian Maori are at least the fourth lot of people to come here."

The Dargaville burial find is far from unique, just more recent. Eden Mill in the Auckland suburb of Onehunga was built in 1843 to grind grain. (see photo) For over a decade in the 1860s it was used to grind up the skeletal remains of countless generations of Patu-paiarehe into fertiliser. Many tens of thousands of skeletons were removed from Auckland burial caves for this purpose and sold to the mill. Maori of the time had no concerns about the fate of these "Tangata Whenua" bones and openly stated to the authorities, 'Do as you wish [with these bones], for these are not our people'.

researchers. The skeletons showed that there were, at least, three distinct physical types of pre-Maori interned there, ranging from the very tall people (around 7 to 8 feet in height - 2.4 metres), to people of normal stature, to the very small pygmy people. Noel: "The small stature "Turehu" were a particularly attractive childlike people with very fine features. We know about them because these small people once populated countries like Ireland and traditional stories relate their occupation of the Pacific range from Tahiti to New Caledonia to New Zealand. A specialist who examined some of the skeletons in the cave likened them to a race of people living in Wales 3000 years ago."

The obvious question is: Why has this discovery, which changes our commonly accepted history, not been made public? It has - an article in the Northern Advocate reported the discovery, including a comment from an Auckland archaeologist, dismissing the antiquity of the bones, which he never viewed. Noel was unable to access facilities to undertake forensic examination of the bones,

Pre-Maori stone pataka.

