

7) Where are the ancient Indo-European hair samples (wavy red and brown), originally obtained from a rock shelter near Waitakere? These woven or platted samples were on display at the Auckland War Memorial Museum for many years and were written about by Maori Historian, Sir Peter Buck. Why don't we subject such samples to DNA analysis? Even an examination of hair strands under a microscope will positively identify the ethnicity of the people the hair came from.

8) What did the Ngati-Whatua Iwi do with the two skeletons of Spanish conquistador soldiers, located on the western side of Pouto Peninsula (northern side of Kaipara Harbour) in 1973? The skeletal remains were exposed when heavy winds moved the sand dunes. The local police officer, Constable Corbett from Dargaville was called to this discovery and other European officials were aware of the find. The bodies had helmets, breastplate armour and the remains of leather boots. They were handed over to the local iwi and, as far as is known, were buried. No further discussion has been forthcoming. Where is the archaeological report and photographs of this dynamic find?

9) Why is carbon dating and DNA analysis not allowed on ancient, non-Maori skeletal remains or the 200 year-old mummified, Indo-European head repatriated to New Zealand in 1998 from Britain by then Minister of Maori Affairs, Tau Henare?

10) When caverns are located containing these remains, as in recent years, why are bulldozers brought in to hide all trace of the locations? This happened when a burial cave containing tall skeletons was discovered during road extensions at Waikaretu, south of Port Waikato. Were any of the skeletons taken away by the anthropologists called in to examine the find? What artefacts were found in the cave and where is the report? Why was a 75 year moratorium placed on the find?

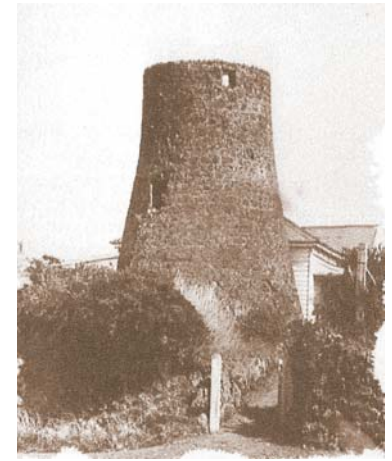
Unknown to the public, there are many archaeological embargos still in place. In May 2004, there were 105 embargos on information that were admitted to by the Hon. Chris Carter (Minister of Conservation) who was asked to answer the question under an Official Information request. He said: "DOC administers the New Zealand Archaeological Association's central file of which 105 were classified as sensitive records... File keepers may create sensitive files...if this is requested by the site recorder..."

Included among these was data from a DOC survey during the 1980s of ancient stone structures in the Waipoua Forest in Northland. The resulting report was hidden and only released when a 75 year embargo placed upon it was challenged in court by researcher Dr Gary Cook. Officials tried to say that there was never any restriction on the material, but 14 sheets compiled by the archaeologist summarising the findings with detailed mapping and the results of radio carbon datings were placed in the National Archives and embargoed. We have the document to prove it. Why was one of the carbon dating reports not released – the one that pushed the dates back before Maori arrived in the area? ■

"I'll Grind Your Bones to Make My Bread..."

Well, not literally, but close. The Eden Mill was also known as Robertson's Mill and Bycroft's Mill – another mill was built at Onehunga by John Bycroft Jun in 1856. Eden Mill stood close to the corner of Windmill and St Andrews Roads. It was wind driven with large sails and solidly built of basalt. A weatherboard store and miller's house were attached. Originally built for William Mason around 1843 to mill local harvests into flour, it was pressed into

action during the 1860s when grain milling declined, as a bone mill, grinding bones into dust for fertiliser. The bones came from the many lava caves in the area, reportedly "the bones of early Maori of enemy tribes defeated in battle" Ref. The History of Mt Eden P20; "The bones of the Maori dead, found in enormous numbers in caves and caverns in the district." Ref. The Changing Face of



Mt Eden by Faye M Angelo p15. Thousands of skeletons of small, mature people discovered in the 1800s all the way up the coast from Auckland to Kaitiaki were also taken to the mill. Local Maori professed no interest in them saying "they are not our people." Details of this "impious" activity are sketchy in publications, as historians shied away from the impropriety of mentioning that human bones were ground for fertilizer. The grinding of human bones is not a new concept however – in Europe during the Middle Ages, Egyptian mummies were ground into dust to make 'magic potions.' In the 17th Century, there was a thriving trade in mummies imported into Maine, USA. Mummy powder made from ground up brittle mummies was apparently as popular in apothecary shops as is aspirin today. When that interest faded, mummies were ground and sold for bone meal fertilizer.

In a future episode of this series, we bring you early newspaper reports on what was found over 100 years ago at One Tree Hill and in other sites around New Zealand. ■

**SUBSCRIBE TO ELOCAL
AND NEVER MISS
OUT AGAIN!**



12 editions \$78.00 +postage/handling (NZ wide)

A GREAT GIFT IDEA!

Online <http://www.elocal.co.nz/Subscribe1.html>

Office 09 239 1699 ext 6

This carved spiral stone, terminating at central concentric rings, is one of the numerous ancient artefacts in Waipoua Forest.



NEXT EDITION

In the next issue of Franklin elocal: What lies within Waipoua Forest, and why is the public denied access to dramatic evidence of its earliest occupiers? Two carbon datings were taken in a DOC survey – one was released but what was revealed by the second that kept it hidden away?