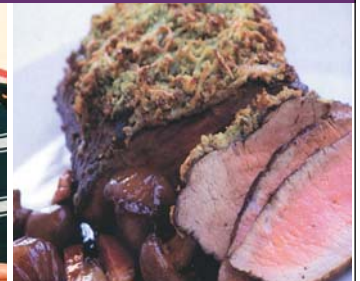




## MY LOCAL BUTCHER

**TO ENTER** Purchase any  
 "product instore between Jan 1st  
 & Feb 18th 2010



**My Local Butcher, Seddon Lane**

(Opposite Foodtown) Pukekohe

09 238 5834 [mylocalbutcher@clear.net.nz](mailto:mylocalbutcher@clear.net.nz)

[www.mylocalbutcher.co.nz](http://www.mylocalbutcher.co.nz)

Kit Home pictured from \$86,760 as at July 09



**To enter**  
 Visit our Showhome.  
 2 Great South Rd,  
 Takanini.

# homes sweet homes.

**Kit Homes from \$45,977**

If you are building your first home, a new home for the family, for the beach, for the farm workers, or even if it's a new garage, A1homes offer simple steps to get you into your new home quickly and easily. We have home plans for all sized budgets and sections, 58 plans from 50sq mtrs to 330sq mtrs, single or two level homes, all with flexible build options. Choose our Kit Home option or Full Build.

**Showhome:**

2 Great South Rd, Takanini

**Open:** Tues- Friday 10-3pm,  
 Sat 12-3pm or by appointment

**Contact:** Tony on 09 238 1000  
 or 021 880 380

Call **0800 A1homes** [www.A1homes.co.nz](http://www.A1homes.co.nz)  
 2 1 4 6 6 3

